



SMU at Utah St.

12/23/22 SimpliFi Arena at Stan Sheriff Center, Honolulu
2022-23 Men's Basketball

Game Time: 2:00 PM

Game Duration: 2:13

Attendance: 4,070

Officials: Michael Greenstein, Darron George, Amy Bonner

SMU - 77

Record: 5-7

NO.	Name	Min	FG	3P	FT	Rebounds			Fouls		TP	AS	TO	ST	Blocks		+/-
			M-A	M-A	M-A	OR	DR	TOT	PF	FD					BS	BA	
11	Samuell Williamson	F 26:15	7-10	0-0	1-1	0	4	4	3	4	15	4	1	3	0	0	-1
23	Efe Odigie	F 23:47	4-7	1-1	3-3	0	3	3	3	3	12	1	0	0	0	0	6
1	Zhuric Phelps	G 34:01	8-21	0-2	3-4	2	6	8	2	4	19	4	1	3	1	2	-3
2	Jalen Smith	G 26:33	0-0	0-0	2-2	1	3	4	2	1	2	3	2	0	0	0	6
10	Zach Nutall	G 29:48	6-10	1-2	0-0	0	0	0	4	1	13	3	1	0	0	0	14
3	Stefan Todorovic	23:12	2-5	1-4	5-5	0	2	2	2	2	10	1	0	1	1	0	11
22	Keon Ambrose-Hylton	16:47	1-4	0-0	0-0	1	2	3	1	1	2	0	0	0	0	1	-5
0	Jefferson Koulibaly	13:00	0-1	0-1	0-0	0	1	1	2	0	0	0	0	1	0	0	-10
24	Emory Lanier	06:37	1-2	1-2	1-2	0	1	1	1	1	4	0	0	0	0	0	-3
Team						2	1	3			0		0				
Totals			29-60	4-12	15-17	6	23	29	20	17	77	16	5	8	2	3	3

Shooting By Period		
1 st FG%	17-30	56.7%
3PT%	3-6	50.0%
FT%	3-4	75%
2 nd FG%	12-30	40.0%
3PT%	1-6	16.7%
FT%	12-13	92.3%
GM FG%	29-60	48.3%
3PT%	4-12	33.3%
FT%	15-17	88.2%

Dead Ball Rebounds: 1, 1

Technical Fouls: Koulibaly 1st 4:59

Utah St. - 74

Record: 10-2

NO.	Name	Min	FG	3P	FT	Rebounds			Fouls		TP	AS	TO	ST	Blocks		+/-
			M-A	M-A	M-A	OR	DR	TOT	PF	FD					BS	BA	
23	Taylor Funk	F 27:46	3-12	0-7	1-1	1	0	1	1	1	7	2	2	0	0	0	3
32	Trevin Dorius	C 13:38	3-4	0-0	0-0	4	5	9	4	1	6	1	0	0	2	0	6
2	Sean Bairstow	G 32:02	7-14	4-6	0-1	3	5	8	0	5	18	1	0	0	1	0	2
3	Steven Ashworth	G 31:21	4-13	3-12	4-5	1	3	4	2	4	15	2	3	0	0	1	-3
11	Max Shulga	G 33:57	5-11	3-6	5-5	0	1	1	2	4	18	4	2	1	0	0	7
30	Dan Akin	25:34	1-4	0-0	6-6	2	5	7	3	3	8	2	1	0	0	1	-8
15	Rylan Jones	14:42	0-1	0-1	0-0	0	1	1	2	1	0	3	1	0	0	0	-10
24	Zee Hamoda	21:00	1-5	0-4	0-0	2	4	6	3	0	2	0	3	0	0	0	-12
Team						2	1	3			0		1				
Totals			24-64	10-36	16-18	15	25	40	17	19	74	15	13	1	3	2	-3

Shooting By Period		
1 st FG%	11-36	30.6%
3PT%	5-20	25.0%
FT%	5-7	71.4%
2 nd FG%	13-28	46.4%
3PT%	5-16	31.3%
FT%	11-11	100%
GM FG%	24-64	37.5%
3PT%	10-36	27.8%
FT%	16-18	88.9%

Dead Ball Rebounds: 3, 1

Technical Fouls: NONE

	SMU	USU
Biggest lead	12 (1 st 8:13)	3 (1 st 19:31)
Best Scoring Run	8 (1 st 0:50)	8 (1 st 6:06)
Lead Changes	1	
Times Tied	3	
Time with Lead	35:34	01:46

Points from	SMU	USU
Turnovers	22	2
Paint	42	26
Second Chance	9	14
Fast Breaks	17	13
Bench	16	10

	Period by Period Scoring		
	1st	2nd	TOT
SMU	40	37	77
USU	32	42	74



Period 1

Period Starters:

USU	2 Bairstow S	3 Ashworth S	11 Shulgama M	23 Funk T	32 Dorius T
SMU	1 Phelps Z	2 Smith J	10 Nutall Z	11 Williamson S	23 Odigie E

Game Time	USU	Score	Diff	SMU
20:00	32 DORIUS T jumpball won			23 ODIGIE E jumpball lost
19:31	11 SHULGAM 3pt FG , jump shot made (3)	3-0	3	
19:31	23 FUNK T assist (1)			
19:10		3-2	1	23 ODIGIE E 2pt FG outside the paint, pull up jump shot made (2)
19:10				2 SMITH J assist (1)
18:58	23 FUNK T 3pt FG , jump shot missed			
18:56				defensive rebound (1)
18:49				1 PHELPS Z turnover bad pass (1)
18:31	2 BAIRSTOWS 2pt FG from turnover in the paint, layup missed			
18:28				1 PHELPS Z defensive rebound (1)
18:25				11 WILLIAMSON S turnover out of bounds (1)
18:01	2 BAIRSTOWS 2pt FG from turnover in the paint, driving layup made (2)	5-2	3	
17:45		5-5	0	23 ODIGIE E 3pt FG , jump shot made (5)
17:45				11 WILLIAMSON S assist (1)
17:30	3 ASHWORTH S foul drawn (1)			11 WILLIAMSON S foul personal (1 - 1)
17:24	3 ASHWORTH S 3pt FG , jump shot missed			
17:21	2 BAIRSTOWS offensive rebound (1)			
17:20	3 ASHWORTH S 3pt FG second chance, jump shot missed			
17:17				2 SMITH J defensive rebound (1)
17:17				2 SMITH J turnover lost ball (1)
17:13	11 SHULGAM foul drawn (1)			23 ODIGIE E foul personal (1 - 2)
16:58	2 BAIRSTOWS 2pt FG from turnover in the paint, hook shot missed			
16:57				11 WILLIAMSON S defensive rebound (1)
16:57	32 DORIUS T foul personal (1 - 1)			11 WILLIAMSON S foul drawn (1)
16:46		5-7	-2	1 PHELPS Z 2pt FG outside the paint, pull up jump shot made (2)
16:46				10 NUTALL Z assist (1)
16:30	23 FUNK T 3pt FG , jump shot missed			
16:25	32 DORIUS T offensive rebound (1)			
16:23	23 FUNK T 3pt FG second chance, jump shot missed			
16:19	2 BAIRSTOWS offensive rebound (2)			
16:00	11 SHULGAM 2pt FG second chance in the paint, layup missed			
15:59	32 DORIUS T offensive rebound (2)			
15:59	turnover shot clock (1)			
15:59	Timeout media			
15:59	32 DORIUS T substitution out			
15:59	30 AKIN D substitution in			
15:59				1 PHELPS Z substitution out
15:59				23 ODIGIE E substitution out
15:59				3 TODOROMC S substitution in
15:59				22 AMBROSE-HYLTON K substitution in
15:42		5-9	-4	10 NUTALL Z 2pt FG from turnover in the paint, layup made (2)
15:18	2 BAIRSTOWS 3pt FG , jump shot made (5)	8-9	-1	



Official Basketball Play by Play - First Half
SMU at Utah St.
 12/23/22 SimpliFi Arena at Stan Sheriff Center, Honolulu
 2022-23 Men's Basketball

Game Time: 2:00 PM
 Game Duration: 2:13
 Attendance: 4,070

Officials: Michael Greenstein, Darron George, Amy Bonner

Game Time	USU	Score	Diff	SMU
15:18	30 AKIN D assist (1)			
14:46				11 WILLIAMSON S 2pt FG outside the paint, hook shot missed
14:45				offensive rebound (5)
14:45	3 ASHWORTH S substitution out			
14:45	15 JONES R substitution in			
14:45				2 SMITH J substitution out
14:45				11 WILLIAMSON S substitution out
14:45				1 PHELPS Z substitution in
14:45				24 LANIER E substitution in
14:45	23 FUNK T substitution out			
14:45	24 HAMODAZ substitution in			
14:45				10 NUTALL Z substitution out
14:45				0 KOULIBALY J substitution in
14:40		8-11	-3	1 PHELPS Z 2pt FG second chance in the paint, layup made (4)
14:08	2 BAIRSTOWS S 3pt FG , jump shot made (8)	11-11	0	
14:08	11 SHULGAM assist (1)			
13:42		11-13	-2	3 TODOROMC S 2pt FG outside the paint, pull up jump shot made (2)
13:17	24 HAMODAZ 3pt FG , jump shot missed			
13:15				1 PHELPS Z defensive rebound (2)
13:01				24 LANIER E 3pt FG , jump shot missed
12:59	2 BAIRSTOWS S defensive rebound (3)			
12:42	2 BAIRSTOWS S 3pt FG , jump shot missed			
12:39				1 PHELPS Z defensive rebound (3)
12:34		11-16	-5	24 LANIER E 3pt FG fast break, jump shot made (3)
12:34				1 PHELPS Z assist (1)
12:12	30 AKIN D turnover 3 seconds (1)			
12:12	2 BAIRSTOWS S substitution out			
12:12	11 SHULGAM substitution out			
12:12	3 ASHWORTH S substitution in			
12:12	23 FUNK T substitution in			
12:12				3 TODOROMC S substitution out
12:12				22 AMBROSE-HYLTON K substitution out
12:12				24 LANIER E substitution out
12:12				10 NUTALL Z substitution in
12:12				11 WILLIAMSON S substitution in
12:12				23 ODIGIE E substitution in
12:02				10 NUTALL Z 3pt FG from turnover, jump shot missed
11:58				1 PHELPS Z offensive rebound (4)
11:55				1 PHELPS Z 2pt FG from turnover second chance in the paint, layup missed
11:53	24 HAMODAZ defensive rebound (1)			
11:48	3 ASHWORTH S turnover lost ball (1)			0 KOULIBALY J steal (1)
11:42		11-18	-7	1 PHELPS Z 2pt FG fast break from turnover in the paint, dunk, made (6)
11:19	30 AKIN D 2pt FG in the paint, layup made (2)	13-18	-5	
11:19	3 ASHWORTH S assist (1)			
11:03				23 ODIGIE E 2pt FG in the paint, hook shot missed
11:00	15 JONES R defensive rebound (1)			
10:53	24 HAMODAZ 3pt FG , jump shot missed			
10:50				0 KOULIBALY J defensive rebound (1)



Official Basketball Play by Play - First Half
SMU at Utah St.
 12/23/22 SimpliFi Arena at Stan Sheriff Center, Honolulu
 2022-23 Men's Basketball

Game Time: 2:00 PM
 Game Duration: 2:13
 Attendance: 4,070

Officials: Michael Greenstein, Darron George, Amy Bonner

Game Time	USU	Score	Diff	SMU
10:33				1 PHELPS Z 3pt FG , jump shot missed
10:29	3 ASHWORTH S defensive rebound (1)			
10:12	3 ASHWORTH S turnover lost ball (2)			
10:12	Timeout media			
10:12				0 KOULIBALY J substitution out
10:12				1 PHELPS Z substitution out
10:12				2 SMITH J substitution in
10:12				3 TODOROMC S substitution in
10:05		13-21	-8	3 TODOROMC S 3pt FG fast break from turnover, jump shot made (5)
10:05				11 WILLIAMSON S assist (2)
09:40	23 FUNK T 2pt FG in the paint, layup made (2)	15-21	-6	
09:40	15 JONES R assist (1)			
09:28	23 FUNK T foul personal (1 - 2)			11 WILLIAMSON S foul drawn (2)
09:17		15-23	-8	10 NUTALL Z 2pt FG in the paint, jump shot made (4)
08:59	23 FUNK T 2pt FG in the paint, hook shot missed			
08:57				23 ODIGIE E defensive rebound (1)
08:46		15-25	-10	11 WILLIAMSON S 2pt FG in the paint, layup made (2)
08:46				2 SMITH J assist (2)
08:25	3 ASHWORTH S 3pt FG , jump shot missed			
08:22	24 HAMODA Z offensive rebound (2)			
08:17	15 JONES R turnover bad pass (1)			11 WILLIAMSON S steal (1)
08:13		15-27	-12	11 WILLIAMSON S 2pt FG fast break from turnover in the paint, dunk, made (4)
08:12	Timeout 30 Sec			
08:12	Timeout media			
08:12	15 JONES R substitution out			
08:12	24 HAMODA Z substitution out			
08:12	2 BAIRSTOW S substitution in			
08:12	11 SHULGA M substitution in			
08:12				2 SMITH J substitution out
08:12				3 TODOROMC S substitution out
08:12				23 ODIGIE E substitution out
08:12				0 KOULIBALY J substitution in
08:12				1 PHELPS Z substitution in
08:12				22 AMBROSE-HYLTON K substitution in
07:59	2 BAIRSTOW S 2pt FG in the paint, layup made (10)	17-27	-10	
07:59	11 SHULGA M assist (2)			
07:59	2 BAIRSTOW S foul drawn (1)			1 PHELPS Z foul shooting (1 - 3)
07:59	2 BAIRSTOW S free throw 1 - 1 missed			
07:58	3 ASHWORTH S offensive rebound (2)			
07:54	23 FUNK T 3pt FG second chance, jump shot missed			
07:53	offensive dead ball rebound (1)			
07:51	2 BAIRSTOW S foul drawn (2)			11 WILLIAMSON S foul personal (2 - 4)
07:38	11 SHULGA M 2pt FG second chance outside the paint, turnaround jump shot missed			
07:35				11 WILLIAMSON S defensive rebound (2)
07:10				1 PHELPS Z 2pt FG outside the paint, step back jump shot missed
07:07	3 ASHWORTH S defensive rebound (3)			
06:59	3 ASHWORTH S 3pt FG , jump shot made (3)	20-27	-7	
06:59	11 SHULGA M assist (3)			



Game Time	USU	Score	Diff	SMU
06:27				1 PHELPS Z 2pt FG in the paint, jump shot missed
06:27				offensive dead ball rebound (1)
06:27	30 AKIN D foul personal (1 - 3)			11 WILLIAMSON S foul drawn (3)
06:27				11 WILLIAMSON S substitution out
06:27				23 ODIGIE E substitution in
06:27				10 NUTALL Z substitution out
06:27				24 LANIER E substitution in
06:27	30 AKIN D substitution out			
06:27	32 DORIUS T substitution in			
06:14				23 ODIGIE E 2pt FG second chance outside the paint, pull up jump shot missed
06:11	2 BAIRSTOW S defensive rebound (4)			
06:06	3 ASHWORTH S 3pt FG fast break, jump shot made (6)	23-27	-4	
06:06	23 FUNK T assist (2)			
05:58				1 PHELPS Z substitution out
05:58				2 SMITH J substitution in
05:53	3 ASHWORTH S foul shooting (1 - 4)			24 LANIER E foul drawn (1)
05:53		23-28	-5	24 LANIER E free throw 1 - 2 made (4)
05:53				22 AMBROSE-HYLTON K substitution out
05:53				3 TODOROMC S substitution in
05:53				24 LANIER E free throw 2 - 2 missed
05:52	32 DORIUS T defensive rebound (3)			
05:40	3 ASHWORTH S 3pt FG , jump shot missed			
05:40	offensive dead ball rebound (2)			
05:40	32 DORIUS T foul drawn (1)			24 LANIER E foul personal (1 - 5)
05:32	23 FUNK T 2pt FG second chance in the paint, layup made (4)	25-28	-3	
05:32	23 FUNK T foul drawn (1)			3 TODOROMC S foul shooting (1 - 6)
05:32	23 FUNK T free throw 1 - 1 made (5)	26-28	-2	
05:17		26-30	-4	23 ODIGIE E 2pt FG in the paint, hook shot made (7)
05:17				2 SMITH J assist (3)
04:59	3 ASHWORTH S foul drawn (2)			0 KOULIBALY J foul personal (1 - 7)
04:59				0 KOULIBALY J foul class A technical (2 - 8)
04:59	3 ASHWORTH S free throw 1 - 2 made (7)	27-30	-3	
04:59	3 ASHWORTH S free throw 2 - 2 made (8)	28-30	-2	
04:59				0 KOULIBALY J substitution out
04:59				24 LANIER E substitution out
04:59				1 PHELPS Z substitution in
04:59				10 NUTALL Z substitution in
04:59	3 ASHWORTH S 1&1 free throw 1 missed			
04:57				23 ODIGIE E defensive rebound (2)
04:45	3 ASHWORTH S foul drawn (3)			2 SMITH J foul offensive (1 - 9)
04:45				2 SMITH J turnover offensive (2)
04:34	23 FUNK T 3pt FG from turnover, jump shot missed			
04:30				2 SMITH J defensive rebound (2)
04:11				23 ODIGIE E 2pt FG in the paint, hook shot missed
04:08	32 DORIUS T defensive rebound (4)			
04:02	11 SHULGAM 2pt FG in the paint, driving layup missed			
03:59	32 DORIUS T offensive rebound (5)			
03:58	32 DORIUS T 2pt FG second chance in the paint, hook shot made (2)	30-30	0	



Official Basketball Play by Play - First Half
SMU at Utah St.
 12/23/22 SimpliFi Arena at Stan Sheriff Center, Honolulu
 2022-23 Men's Basketball

Game Time: 2:00 PM
 Game Duration: 2:13
 Attendance: 4,070

Officials: Michael Greenstein, Darron George, Amy Bonner

Game Time	USU	Score	Diff	SMU
03:38				10 NUTALL Z 2pt FG outside the paint, pull up jump shot missed
03:36	2 BAIRSTOW S defensive rebound (5)			
03:24	2 BAIRSTOW S 2pt FG in the paint, hook shot missed			
03:21				1 PHELPS Z defensive rebound (5)
03:12	32 DORIUS T foul shooting (2 - 5)			1 PHELPS Z foul drawn (1)
03:12	Timeout media			
03:12	32 DORIUS T substitution out			
03:12	30 AKIN D substitution in			
03:12				23 ODIGIE E substitution out
03:12				22 AMBROSE-HYLTON K substitution in
03:12		30-31	-1	1 PHELPS Z free throw 1 - 2 made (7)
03:12		30-32	-2	1 PHELPS Z free throw 2 - 2 made (8)
03:03	11 SHULGAM turnover bad pass (1)			1 PHELPS Z steal (1)
02:59		30-34	-4	1 PHELPS Z 2pt FG fast break from turnover in the paint, driving layup made (10)
02:30	11 SHULGAM 3pt FG , jump shot missed			
02:29	offensive rebound (17)			
02:27	23 FUNK T 2pt FG second chance in the paint, layup missed			
02:25	30 AKIN D offensive rebound (1)			
02:23	30 AKIN D 2pt FG second chance in the paint, layup missed			
02:21				3 TODOROMC S defensive rebound (1)
02:19				1 PHELPS Z 2pt FG in the paint, layup missed
02:16	30 AKIN D defensive rebound (2)			
01:55	2 BAIRSTOW S 2pt FG in the paint, jump shot missed			
01:49				22 AMBROSE-HYLTON K defensive rebound (1)
01:34	11 SHULGAM foul personal (1 - 6)			1 PHELPS Z foul drawn (2)
01:25				22 AMBROSE-HYLTON K 2pt FG in the paint, layup missed
01:23				2 SMITH J offensive rebound (3)
01:19		30-36	-6	22 AMBROSE-HYLTON K 2pt FG second chance in the paint, alleyoop made (2)
01:19				10 NUTALL Z assist (2)
00:54	23 FUNK T turnover bad pass (1)			3 TODOROMC S steal (1)
00:50		30-38	-8	1 PHELPS Z 2pt FG fast break from turnover in the paint, dunk, made (12)
00:50				3 TODOROMC S assist (1)
00:43	3 ASHWORTH S 3pt FG , jump shot missed			
00:43	offensive dead ball rebound (3)			
00:43	30 AKIN D foul drawn (1)			10 NUTALL Z foul personal (1 - 10)
00:43	30 AKIN D free throw fast break 1 - 2 made (3)	31-38	-7	
00:43	30 AKIN D free throw fast break 2 - 2 made (4)	32-38	-6	
00:43				Timeout 30 Sec
00:43	23 FUNK T substitution out			
00:43	24 HAMODA Z substitution in			
00:28		32-40	-8	10 NUTALL Z 2pt FG in the paint, driving layup made (6)
00:00	2 BAIRSTOW S 3pt FG , jump shot missed			
00:00				defensive dead ball rebound (2)
END OF PERIOD				
USU 32-40 SMU				



SMU at Utah St.

12/23/22 SimpliFi Arena at Stan Sheriff Center, Honolulu
2022-23 Men's Basketball

Officials: Michael Greenstein, Darron George, Amy Bonner

SMU - 40

NO.	Name	F	Min	FG			Rebounds			Fouls		TP	AS	TO	ST	Blocks		+/-
				M-A	M-A	M-A	OR	DR	TOT	PF	FD					BS	BA	
11	Samuell Williamson	F	11:00	2-3	0-0	0-0	0	2	2	2	3	4	2	1	1	0	0	3
23	Efe Odigie	F	11:16	3-6	1-1	0-0	0	2	2	1	0	7	0	0	0	0	0	2
1	Zhuric Phelps	G	15:47	5-10	0-1	2-2	1	4	5	1	2	12	1	1	1	0	0	4
2	Jalen Smith	G	13:13	0-0	0-0	0-0	1	2	3	1	0	0	3	2	0	0	0	12
10	Zach Nutall	G	15:59	3-5	0-1	0-0	0	0	0	1	0	6	2	0	0	0	0	9
3	Stefan Todorovic		11:40	2-2	1-1	0-0	0	1	1	1	0	5	1	0	1	0	0	13
22	Keon Ambrose-Hylton		09:18	1-2	0-0	0-0	0	1	1	0	0	2	0	0	0	0	0	4
0	Jefferson Koulibaly		07:46	0-0	0-0	0-0	0	1	1	2	0	0	0	0	1	0	0	-6
24	Emory Lanier		04:01	1-2	1-2	1-2	0	0	0	1	1	4	0	0	0	0	0	-1
Team							1	1	2			0		0				
Totals				17-30	3-6	3-4	3	14	17	10	6	40	9	4	4	0	0	8

Shooting By Period		
1st FG%	17-30	56.7%
3PT%	3-6	50.0%
FT%	3-4	75%
GM FG%	17-30	56.7%
3PT%	3-6	50.0%
FT%	3-4	75.0%

Dead Ball Rebounds: 1, 1

Technical Fouls: Koulibaly 1st 4:59

Utah St. - 32

NO.	Name	F	Min	FG			Rebounds			Fouls		TP	AS	TO	ST	Blocks		+/-
				M-A	M-A	M-A	OR	DR	TOT	PF	FD					BS	BA	
23	Taylor Funk	F	16:44	2-9	0-5	1-1	0	0	0	1	1	5	2	1	0	0	0	-2
32	Trevin Dorius	C	07:16	1-1	0-0	0-0	3	2	5	2	1	2	0	0	0	0	0	5
2	Sean Bairstow	G	16:00	4-10	2-4	0-1	2	3	5	0	2	10	0	0	0	0	0	-1
3	Steven Ashworth	G	17:27	2-7	2-7	2-3	1	2	3	1	3	8	1	2	0	0	0	-4
11	Max Shulga	G	16:00	1-5	1-2	0-0	0	0	0	1	1	3	3	1	0	0	0	-1
30	Dan Akin		12:44	1-2	0-0	2-2	1	1	2	1	1	4	1	1	0	0	0	-13
15	Rylan Jones		06:33	0-0	0-0	0-0	0	1	1	0	0	0	1	1	0	0	0	-11
24	Zee Hamoda		07:16	0-2	0-2	0-0	1	1	2	0	0	0	0	0	0	0	0	-13
Team							1	0	1			0		1				
Totals				11-36	5-20	5-7	9	10	19	6	9	32	8	7	0	0	0	-8

Shooting By Period		
1st FG%	11-36	30.6%
3PT%	5-20	25.0%
FT%	5-7	71.4%
GM FG%	11-36	30.6%
3PT%	5-20	25.0%
FT%	5-7	71.4%

Dead Ball Rebounds: 3, 0

Technical Fouls: NONE

	SMU	USU
Biggest lead	12 (1 st 8:13)	3 (1 st 19:31)
Best Scoring Run	8 (1 st 0:50)	8 (1 st 6:06)
Lead Changes	1	
Times Tied	3	
Time with Lead	15:34	01:46

Points from	SMU	USU
Turnovers	13	2
Paint	22	12
Second Chance	4	7
Fast Breaks	14	5
Bench	11	4

	Period by Period Scoring		
	1st	2nd	TOT
SMU	40	37	77
USU	32	42	74



Period 2

Period Starters:

USU	2 Bairstow S	3 Ashworth S	11 Shulga M	23 Funk T	32 Dorius T
SMU	1 Phelps Z	2 Smith J	10 Nutall Z	11 Williamson S	23 Odigie E

Game Time	USU	Score	Diff	SMU
20:00	24 HAMODAZ substitution out			
20:00	30 AKIN D substitution out			
20:00	23 FUNK T substitution in			
20:00	32 DORIUS T substitution in			
20:00				3 TODOROMC S substitution out
20:00				22 AMBROSE-HYLTON K substitution out
20:00				11 WILLIAMSON S substitution in
20:00				23 ODIGIE E substitution in
19:43		32-42	-10	11 WILLIAMSON S 2pt FG in the paint, layup made (6)
19:25	11 SHULGAM 2pt FG in the paint, turnaround jump shot made (5)	34-42	-8	
19:03		34-44	-10	11 WILLIAMSON S 2pt FG in the paint, pull up jump shot made (8)
19:03				1 PHELPS Z assist (2)
18:47	32 DORIUS T 2pt FG in the paint, dunk, made (4)	36-44	-8	
18:47	3 ASHWORTH S assist (2)			
18:23				10 NUTALL Z 2pt FG in the paint, jump shot missed
18:18	32 DORIUS T defensive rebound (6)			
18:12	3 ASHWORTH S 2pt FG in the paint, driving layup made (10)	38-44	-6	
18:12	32 DORIUS T assist (1)			
17:52				1 PHELPS Z 2pt FG in the paint, layup blocked
17:52	32 DORIUS T block (1)			
17:51	32 DORIUS T defensive rebound (7)			
17:34	32 DORIUS T 2pt FG in the paint, dunk, missed			
17:32				11 WILLIAMSON S defensive rebound (3)
17:29	3 ASHWORTH S foul personal (2 - 1)			1 PHELPS Z foul drawn (3)
17:24		38-46	-8	10 NUTALL Z 2pt FG in the paint, jump shot made (8)
17:24				23 ODIGIE E assist (1)
17:17	3 ASHWORTH S 3pt FG, jump shot missed			
17:14	2 BAIRSTOW S offensive rebound (6)			
17:14	2 BAIRSTOW S foul drawn (3)			10 NUTALL Z foul personal (2 - 1)
17:04	2 BAIRSTOW S foul drawn (4)			11 WILLIAMSON S foul personal (3 - 2)
17:04				11 WILLIAMSON S substitution out
17:04				3 TODOROMC S substitution in
16:58	23 FUNK T turnover bad pass (2)			1 PHELPS Z steal (2)
16:52				2 SMITH J substitution out
16:52				0 KOULIBALY J substitution in
16:50				10 NUTALL Z 2pt FG from turnover outside the paint, pull up jump shot missed
16:47	2 BAIRSTOW S defensive rebound (7)			
16:32	2 BAIRSTOW S 2pt FG in the paint, layup missed			
16:31	32 DORIUS T offensive rebound (8)			
16:29	32 DORIUS T 2pt FG second chance in the paint, layup made (6)	40-46	-6	
16:17		40-48	-8	23 ODIGIE E 2pt FG in the paint, hook shot made (9)
16:17	32 DORIUS T foul shooting (3 - 2)			23 ODIGIE E foul drawn (1)



Official Basketball Play by Play - Second Half
SMU at Utah St.
 12/23/22 SimpliFi Arena at Stan Sheriff Center, Honolulu
 2022-23 Men's Basketball

Game Time: 2:00 PM
 Game Duration: 2:13
 Attendance: 4,070

Officials: Michael Greenstein, Darron George, Amy Bonner

Game Time	USU	Score	Diff	SMU
16:17	3 ASHWORTH S substitution out			
16:17	15 JONES R substitution in			
16:17	2 BAIRSTOW S substitution out			
16:17	32 DORIUS T substitution out			
16:17	24 HAMODAZ substitution in			
16:17	30 AKIN D substitution in			
16:17				10 NUTALL Z substitution out
16:17				24 LANIER E substitution in
16:17		40-49	-9	23 ODIGIE E free throw 1 - 1 made (10)
15:57	24 HAMODAZ 3pt FG , jump shot missed			
15:53	30 AKIN D offensive rebound (3)			
15:45	11 SHULGAM 3pt FG second chance, jump shot made (8)	43-49	-6	
15:45	15 JONES R assist (2)			
15:27				3 TODOROMC S 3pt FG , jump shot missed
15:24	30 AKIN D defensive rebound (4)			
15:17	23 FUNK T 2pt FG outside the paint, pull up jump shot made (7)	45-49	-4	
15:17	30 AKIN D assist (2)			
14:56	30 AKIN D foul personal (2 - 3)			23 ODIGIE E foul drawn (2)
14:56	Timeout media			
14:56	11 SHULGAM substitution out			
14:56	3 ASHWORTH S substitution in			
14:56				1 PHELPS Z substitution out
14:56				23 ODIGIE E substitution out
14:56				10 NUTALL Z substitution in
14:56				22 AMBROSE-HYLTON K substitution in
14:56	3 ASHWORTH S substitution out			
14:56	11 SHULGAM substitution in			
14:45				22 AMBROSE-HYLTON K 2pt FG in the paint, hook shot missed
14:43				22 AMBROSE-HYLTON K offensive rebound (2)
14:43	24 HAMODAZ foul personal (1 - 4)			22 AMBROSE-HYLTON K foul drawn (1)
14:27	15 JONES R foul personal (1 - 5)			10 NUTALL Z foul drawn (1)
14:17	11 SHULGAM steal (1)			10 NUTALL Z turnover bad pass (1)
14:12	11 SHULGAM 3pt FG from turnover, jump shot missed			
14:09				24 LANIER E defensive rebound (1)
13:41	15 JONES R foul shooting (2 - 6)			3 TODOROMC S foul drawn (1)
13:41		45-50	-5	3 TODOROMC S free throw 1 - 3 made (6)
13:41		45-51	-6	3 TODOROMC S free throw 2 - 3 made (7)
13:41				10 NUTALL Z substitution out
13:41				24 LANIER E substitution out
13:41				1 PHELPS Z substitution in
13:41				2 SMITH J substitution in
13:41		45-52	-7	3 TODOROMC S free throw 3 - 3 made (8)
13:26	30 AKIN D 2pt FG in the paint, layup missed			
13:22				3 TODOROMC S defensive rebound (2)
13:07				3 TODOROMC S 3pt FG , jump shot missed
13:03	24 HAMODAZ defensive rebound (3)			
12:55	23 FUNK T 3pt FG , jump shot missed			
12:51	24 HAMODAZ offensive rebound (4)			
12:50	24 HAMODAZ 2pt FG second chance in the paint, layup made (2)	47-52	-5	
12:19	30 AKIN D foul shooting (3 - 7)			3 TODOROMC S foul drawn (2)



Official Basketball Play by Play - Second Half
SMU at Utah St.
 12/23/22 SimpliFi Arena at Stan Sheriff Center, Honolulu
 2022-23 Men's Basketball

Game Time: 2:00 PM
 Game Duration: 2:13
 Attendance: 4,070

Officials: Michael Greenstein, Darron George, Amy Bonner

Game Time	USU	Score	Diff	SMU
12:19		47-53	-6	3 TODOROMC S free throw 1 - 2 made (9)
12:19	23 FUNK T substitution out			
12:19	2 BAIRSTOW S substitution in			
12:19		47-54	-7	3 TODOROMC S free throw 2 - 2 made (10)
12:19	30 AKIN D substitution out			
12:19	32 DORIUS T substitution in			
12:19	Timeout media			
12:19				3 TODOROMC S substitution out
12:19				11 WILLIAMSON S substitution in
12:03	11 SHULGAM 3pt FG , jump shot made (11)	50-54	-4	
12:03	15 JONES R assist (3)			
11:44				0 KOULIBALY J 3pt FG , jump shot missed
11:41	24 HAMODAZ defensive rebound (5)			
11:38	11 SHULGAM foul drawn (2)			2 SMITH J foul personal (2 - 3)
11:38				0 KOULIBALY J substitution out
11:38				10 NUTALL Z substitution in
11:31	11 SHULGAM 3pt FG , jump shot missed			
11:26				22 AMBROSE-HYLTON K defensive rebound (3)
11:06				11 WILLIAMSON S 2pt FG outside the paint, pull up jump shot missed
11:03	32 DORIUS T defensive rebound (9)			
10:47	15 JONES R 3pt FG , jump shot missed			
10:43				1 PHELPS Z defensive rebound (6)
10:20				22 AMBROSE-HYLTON K 2pt FG in the paint, layup blocked
10:20	32 DORIUS T block (2)			
10:15	24 HAMODAZ defensive rebound (6)			
10:11	15 JONES R foul drawn (1)			10 NUTALL Z foul personal (3 - 4)
10:11	11 SHULGAM substitution out			
10:11	3 ASHWORTH S substitution in			
10:09	3 ASHWORTH S 3pt FG , jump shot blocked			
10:09				1 PHELPS Z block (1)
10:08	offensive rebound (32)			
10:08				2 SMITH J substitution out
10:08				22 AMBROSE-HYLTON K substitution out
10:08				3 TODOROMC S substitution in
10:08				23 ODIGIE E substitution in
10:07	24 HAMODAZ turnover travel (1)			
09:44				1 PHELPS Z 2pt FG from turnover outside the paint, jump shot blocked
09:44	2 BAIRSTOW S block (1)			
09:43				offensive rebound (24)
09:41		50-56	-6	11 WILLIAMSON S 2pt FG from turnover second chance in the paint, layup made (10)
09:41				1 PHELPS Z assist (3)
09:40	32 DORIUS T foul shooting (4 - 8)			11 WILLIAMSON S foul drawn (4)
09:40	32 DORIUS T substitution out			
09:40	30 AKIN D substitution in			
09:40		50-57	-7	11 WILLIAMSON S free throw 1 - 1 made (11)
09:24	24 HAMODAZ turnover bad pass (2)			11 WILLIAMSON S steal (2)
09:07				11 WILLIAMSON S 2pt FG from turnover outside the paint, turnaround jump shot missed
09:04	30 AKIN D defensive rebound (5)			



Official Basketball Play by Play - Second Half
SMU at Utah St.
 12/23/22 SimpliFi Arena at Stan Sheriff Center, Honolulu
 2022-23 Men's Basketball

Game Time: 2:00 PM
 Game Duration: 2:13
 Attendance: 4,070

Officials: Michael Greenstein, Darron George, Amy Bonner

Game Time	USU	Score	Diff	SMU
08:51	2 BAIRSTOW S 2pt FG in the paint, turnaround jump shot made (12)	52-57	-5	
08:31		52-59	-7	1 PHELPS Z 2pt FG outside the paint, pull up jump shot made (14)
08:08	2 BAIRSTOW S foul drawn (5)			3 TODOROMC S foul personal (2 - 5)
08:08	15 JONES R substitution out			
08:08	24 HAMODAZ substitution out			
08:08	11 SHULGAM substitution in			
08:08	23 FUNK T substitution in			
07:53	3 ASHWORTH S foul drawn (4)			23 ODIGIE E foul shooting (2 - 6)
07:53				Timeout media
07:53	3 ASHWORTH S free throw 1 - 2 made (11)	53-59	-6	
07:53	3 ASHWORTH S free throw 2 - 2 made (12)	54-59	-5	
07:34		54-61	-7	11 WILLIAMSON S 2pt FG in the paint, turnaround jump shot made (13)
07:34				1 PHELPS Z assist (4)
07:19	3 ASHWORTH S 3pt FG , jump shot missed			
07:17				23 ODIGIE E defensive rebound (3)
06:57				1 PHELPS Z 2pt FG outside the paint, step back jump shot missed
06:54	3 ASHWORTH S defensive rebound (4)			
06:49	23 FUNK T 3pt FG , jump shot missed			
06:45				11 WILLIAMSON S defensive rebound (4)
06:39				Timeout 30 Sec
06:39				1 PHELPS Z substitution out
06:39				23 ODIGIE E substitution out
06:39				2 SMITH J substitution in
06:39				22 AMBROSE-HYLTON K substitution in
06:26		54-63	-9	10 NUTALL Z 2pt FG in the paint, driving layup made (10)
06:09	11 SHULGAM foul drawn (3)			10 NUTALL Z foul shooting (4 - 7)
06:08	11 SHULGAM free throw 1 - 3 made (12)	55-63	-8	
06:08	11 SHULGAM free throw 2 - 3 made (13)	56-63	-7	
06:08	23 FUNK T substitution out			
06:08	24 HAMODAZ substitution in			
06:08				10 NUTALL Z substitution out
06:08				1 PHELPS Z substitution in
06:08	11 SHULGAM free throw 3 - 3 made (14)	57-63	-6	
05:47				1 PHELPS Z 2pt FG in the paint, jump shot missed
05:45	2 BAIRSTOW S defensive rebound (8)			
05:41	3 ASHWORTH S 3pt FG fast break, jump shot made (15)	60-63	-3	
05:41	2 BAIRSTOW S assist (1)			
05:16				1 PHELPS Z 2pt FG in the paint, driving layup missed
05:13	30 AKIN D defensive rebound (6)			
05:04	30 AKIN D 2pt FG in the paint, layup blocked			
05:04				3 TODOROMC S block (1)
05:00				2 SMITH J defensive rebound (4)
04:42				1 PHELPS Z 3pt FG , jump shot missed
04:39	defensive dead ball rebound (4)			
04:39	30 AKIN D foul drawn (2)			22 AMBROSE-HYLTON K foul personal (1 - 8)
04:39	30 AKIN D 1&1 free throw 1 made (5)	61-63	-2	
04:39	30 AKIN D 1&1 free throw 2 made (6)	62-63	-1	
04:26				3 TODOROMC S 3pt FG , jump shot missed



Official Basketball Play by Play - Second Half
SMU at Utah St.
 12/23/22 SimpliFi Arena at Stan Sheriff Center, Honolulu
 2022-23 Men's Basketball

Game Time: 2:00 PM
 Game Duration: 2:13
 Attendance: 4,070

Officials: Michael Greenstein, Darron George, Amy Bonner

Game Time	USU	Score	Diff	SMU
04:20	11 SHULGAM defensive rebound (1)			
04:04	3 ASHWORTH S turnover out of bounds (3)			
04:04				22 AMBROSE-HYLTON K substitution out
04:04				23 ODIGIE E substitution in
03:50				1 PHELPS Z 2pt FG from turnover outside the paint, jump shot missed
03:46				1 PHELPS Z offensive rebound (7)
03:46		62-65	-3	1 PHELPS Z 2pt FG from turnover second chance in the paint, layup made (16)
03:21	Timeout 30 Sec			
03:21				Timeout media
03:21	30 AKIN D substitution out			
03:21	23 FUNK T substitution in			
03:21				3 TODOROMC S substitution out
03:21				10 NUTALL Z substitution in
03:19	11 SHULGAM 2pt FG in the paint, layup made (16)	64-65	-1	
02:56	24 HAMODAZ foul personal (2 - 9)			23 ODIGIE E foul drawn (3)
02:56		64-66	-2	23 ODIGIE E 1&1 free throw 1 made (11)
02:56		64-67	-3	23 ODIGIE E 1&1 free throw 2 made (12)
02:39	24 HAMODAZ 3pt FG , jump shot missed			
02:36	23 FUNK T offensive rebound (1)			
02:33	24 HAMODAZ turnover lost ball (3)			1 PHELPS Z steal (3)
02:33	24 HAMODAZ foul personal (3 - 10)			2 SMITH J foul drawn (1)
02:33		64-68	-4	2 SMITH J free throw fast break 1 - 2 made (1)
02:33	24 HAMODAZ substitution out			
02:33	30 AKIN D substitution in			
02:33		64-69	-5	2 SMITH J free throw fast break 2 - 2 made (2)
02:17	30 AKIN D foul drawn (3)			23 ODIGIE E foul personal (3 - 9)
02:17	23 FUNK T substitution out			
02:17	24 HAMODAZ substitution in			
02:17	30 AKIN D 1&1 free throw 1 made (7)	65-69	-4	
02:17	30 AKIN D 1&1 free throw 2 made (8)	66-69	-3	
01:53		66-71	-5	1 PHELPS Z 2pt FG in the paint, layup made (18)
01:53				11 WILLIAMSON S assist (3)
01:37	3 ASHWORTH S 3pt FG , jump shot missed			
01:34				1 PHELPS Z defensive rebound (8)
01:13				1 PHELPS Z 2pt FG in the paint, pull up jump shot missed
01:11	defensive rebound (39)			
01:11	24 HAMODAZ substitution out			
01:11	23 FUNK T substitution in			
00:59	11 SHULGAM foul drawn (4)			1 PHELPS Z foul personal (2 - 10)
00:59	11 SHULGAM free throw 1 - 2 made (17)	67-71	-4	
00:59	11 SHULGAM free throw 2 - 2 made (18)	68-71	-3	
00:59	23 FUNK T substitution out			
00:59	24 HAMODAZ substitution in			
00:56				Timeout 30 Sec
00:33		68-74	-6	10 NUTALL Z 3pt FG , jump shot made (13)
00:33				11 WILLIAMSON S assist (4)
00:24	11 SHULGAM turnover bad pass (2)			11 WILLIAMSON S steal (3)
00:23				Timeout 60 Sec



Official Basketball Play by Play - Second Half
SMU at Utah St.
 12/23/22 SimpliFi Arena at Stan Sheriff Center, Honolulu
 2022-23 Men's Basketball

Game Time: 2:00 PM
Game Duration: 2:13
Attendance: 4,070

Officials: Michael Greenstein, Darron George, Amy Bonner

Game Time	USU	Score	Diff	SMU
00:14		68-76	-8	11 WILLIAMSON S 2pt FG from turnover in the paint, alleyoop made (15)
00:14				10 NUTALL Z assist (3)
00:09	2 BAIRSTOW S 3pt FG fast break, jump shot made (15)	71-76	-5	
00:09	11 SHULGAM assist (4)			
00:07	Timeout 30 Sec			
00:06	11 SHULGAM foul personal (2 - 11)			1 PHELPS Z foul drawn (4)
00:06		71-77	-6	1 PHELPS Z free throw fast break 1 - 2 made (19)
00:06	24 HAMODAZ substitution out			
00:06	23 FUNK T substitution in			
00:06				23 ODIGIE E substitution out
00:06				22 AMBROSE-HYLTON K substitution in
00:06				1 PHELPS Z free throw fast break 2 - 2 missed
00:06	30 AKIN D defensive rebound (7)			
00:01	2 BAIRSTOW S 3pt FG , jump shot made (18)	74-77	-3	
END OF GAME				
USU 74-77 SMU				



Officials: Michael Greenstein, Darron George, Amy Bonner

SMU - 37

NO.	Name	F	Min	FG			Rebounds			Fouls		TP	AS	TO	ST	Blocks		+/-
				M-A	M-A	M-A	OR	DR	TOT	PF	FD					BS	BA	
11	Samuell Williamson	F	15:15	5-7	0-0	1-1	0	2	2	1	1	11	2	0	2	0	0	-4
23	Efe Odigie	F	12:31	1-1	0-0	3-3	0	1	1	2	3	5	1	0	0	0	0	4
1	Zhuric Phelps	G	18:14	3-11	0-1	1-2	1	2	3	1	2	7	3	0	2	1	2	-7
2	Jalen Smith	G	13:20	0-0	0-0	2-2	0	1	1	1	1	2	0	0	0	0	0	-6
10	Zach Nutall	G	13:49	3-5	1-1	0-0	0	0	0	3	1	7	1	1	0	0	0	5
3	Stefan Todorovic		11:32	0-3	0-3	5-5	0	1	1	1	2	5	0	0	0	1	0	-2
0	Jefferson Koulibaly		05:14	0-1	0-1	0-0	0	0	0	0	0	0	0	0	0	0	0	-4
24	Emory Lanier		02:36	0-0	0-0	0-0	0	1	1	0	0	0	0	0	0	0	0	-2
22	Keon Ambrose-Hylton		07:29	0-2	0-0	0-0	1	1	2	1	1	0	0	0	0	0	1	-9
Team							1	0	1			0		0				
Totals				12-30	1-6	12-13	3	9	12	10	11	37	7	1	4	2	3	-5

Shooting By Period		
2 nd FG%	12-30	40.0%
3PT%	1-6	16.7%
FT%	12-13	92.3%
GM FG%	12-30	40.0%
3PT%	1-6	16.7%
FT%	12-13	92.3%

Dead Ball Rebounds: 0, 0

Technical Fouls: NONE

Utah St. - 42

NO.	Name	F	Min	FG			Rebounds			Fouls		TP	AS	TO	ST	Blocks		+/-
				M-A	M-A	M-A	OR	DR	TOT	PF	FD					BS	BA	
23	Taylor Funk	F	11:02	1-3	0-2	0-0	1	0	1	0	0	2	0	1	0	0	0	5
32	Trevin Dorius	C	06:22	2-3	0-0	0-0	1	3	4	2	0	4	1	0	0	2	0	1
2	Sean Bairstow	G	16:02	3-4	2-2	0-0	1	2	3	0	3	8	1	0	0	1	0	3
3	Steven Ashworth	G	13:54	2-6	1-5	2-2	0	1	1	1	1	7	1	1	0	0	1	1
11	Max Shulga	G	17:57	4-6	2-4	5-5	0	1	1	1	3	15	1	1	1	0	0	8
15	Rylan Jones		08:09	0-1	0-1	0-0	0	0	0	2	1	0	2	0	0	0	0	1
24	Zee Hamoda		13:44	1-3	0-2	0-0	1	3	4	3	0	2	0	3	0	0	0	1
30	Dan Akin		12:50	0-2	0-0	4-4	1	4	5	2	2	4	1	0	0	0	1	5
Team							1	1	2			0		0				
Totals				13-28	5-16	11-11	6	15	21	11	10	42	7	6	1	3	2	5

Shooting By Period		
2 nd FG%	13-28	46.4%
3PT%	5-16	31.3%
FT%	11-11	100%
GM FG%	13-28	46.4%
3PT%	5-16	31.3%
FT%	11-11	100.0%

Dead Ball Rebounds: 0, 1

Technical Fouls: NONE

	SMU	USU
Biggest lead	10 (2 nd 19:43)	0 (1 st 20:00)
Best Scoring Run	5 (2 nd 0:14)	8 (2 nd 4:39)
Lead Changes	0	
Times Tied	0	
Time with Lead	19:43	00:00

Points from	SMU	USU
Turnovers	9	0
Paint	20	14
Second Chance	5	7
Fast Breaks	3	8
Bench	5	6

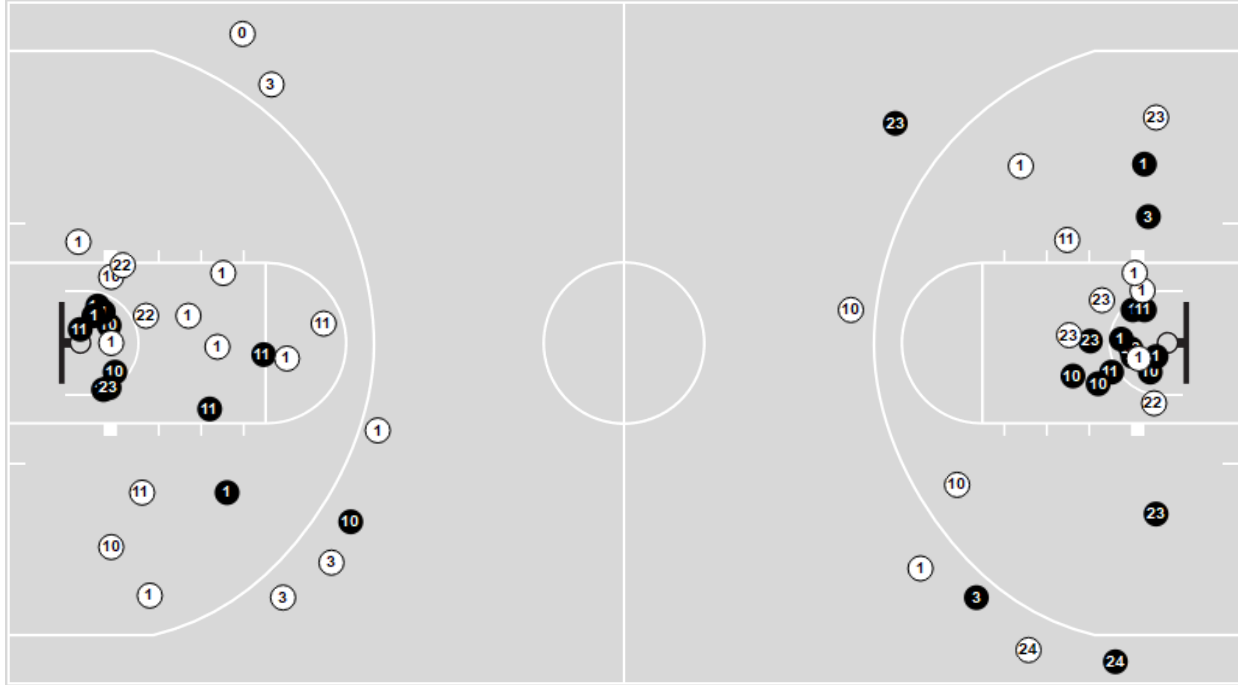
	Period by Period Scoring		
	1st	2nd	TOT
SMU	40	37	77
USU	32	42	74



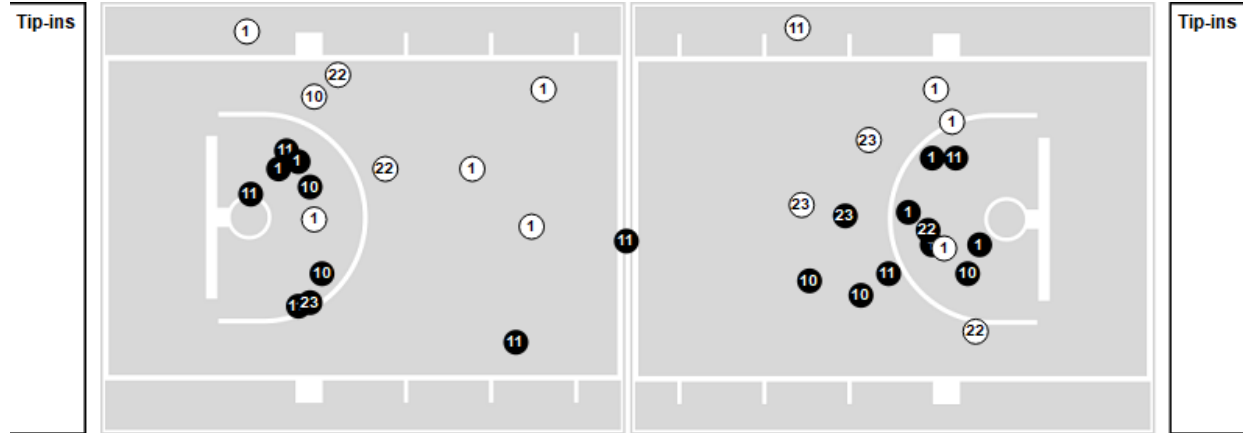
Officials: Michael Greenstein, Darron George, Amy Bonner

Players => All ; FG Types => All ; Results => All ;
SMU

All Field Goals



Shots in the Paint



● Made ○ Missed N - Player Number

SMU	M/A	%
Field Goals	29/60	48
2 Points	25/48	52
3 Points	4/12	33
Free Throws	15/17	88

SMU	M/A	%
Points in the Paint	42 (21/34)	62
Fast Break Points	17 (9/10)	90
Second Chance Points	9 (5/7)	71
Effective FG%	52	

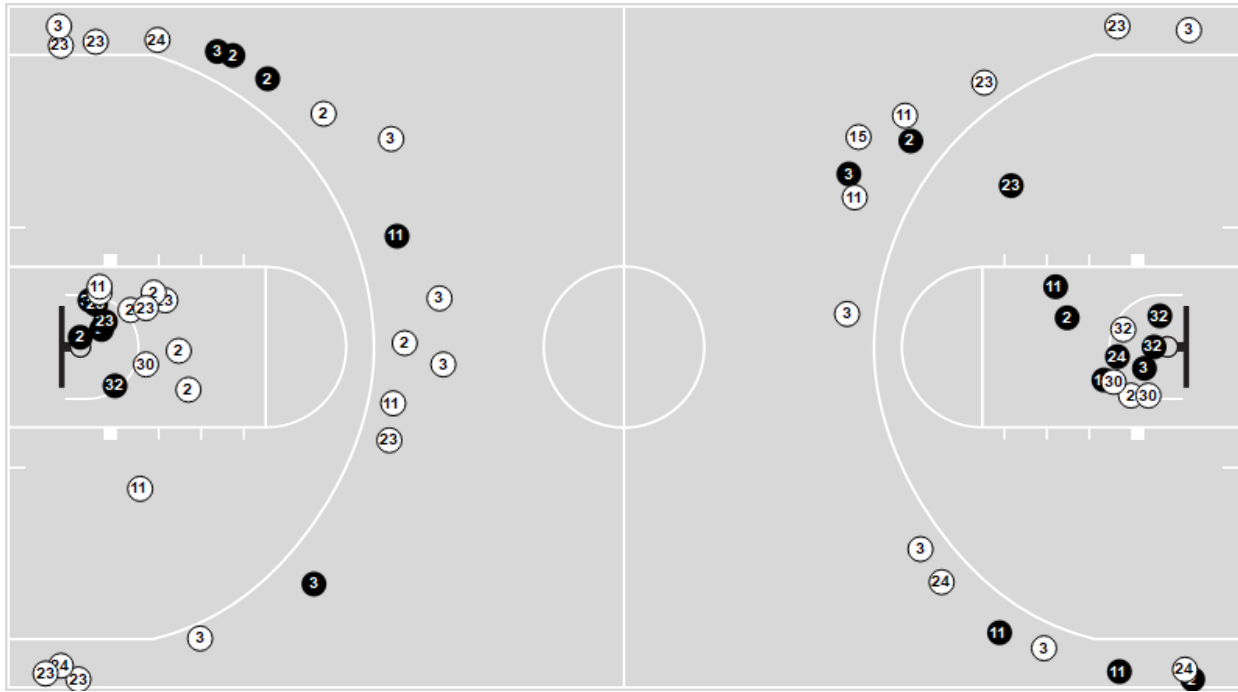


Officials: Michael Greenstein, Darron George, Amy Bonner

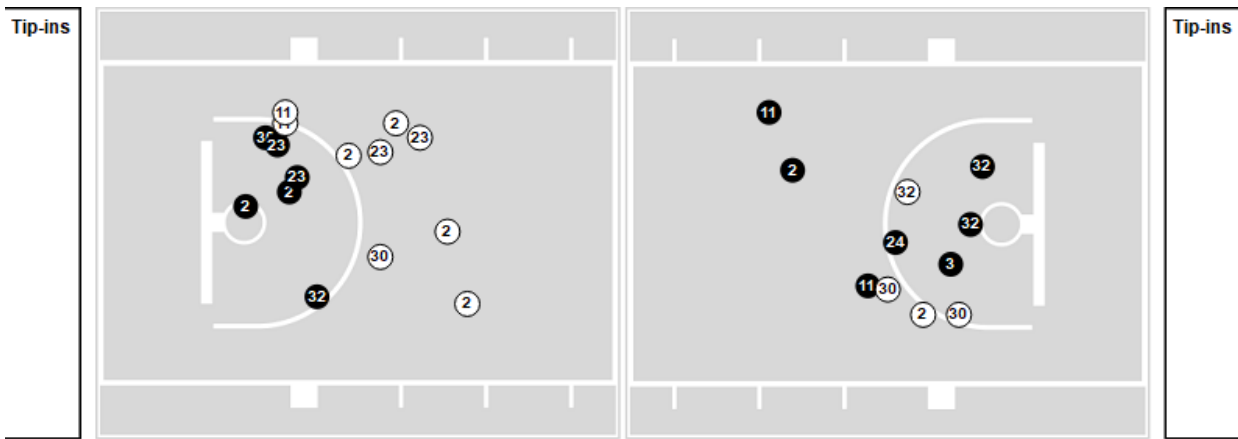
Players => All ; FG Types => All ; Results => All ;

Utah St.

All Field Goals



Shots in the Paint



N Made **○** Missed **N** - Player Number

Utah St.	M/A	%
Field Goals	24/64	38
2 Points	14/28	50
3 Points	10/36	28
Free Throws	16/18	89

Utah St.	M/A	%
Points in the Paint	26 (13/26)	50
Fast Break Points	13 (7/7)	100
Second Chance Points	14 (8/15)	53
Effective FG%	45	